



2016-2-22



国际原油低位震荡，上游对期价波动影响有限

2 19 WTI 3  
31.96 / 2 5 0.96 / Brent 4  
33.12 / 2 5 1.01 / EIA  
210

9

2 12

5.0411

215

6470

9

2 19

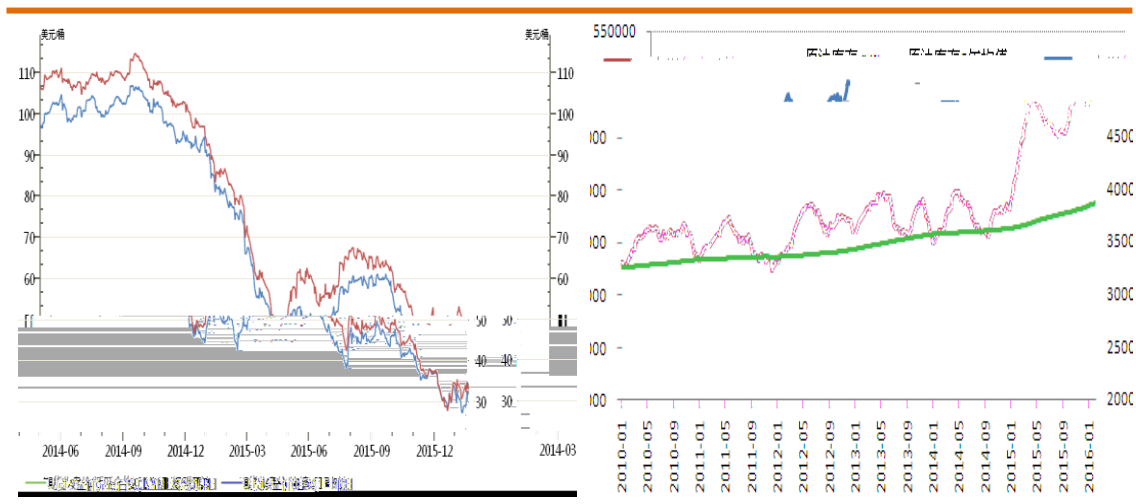
413

26

606

1

2

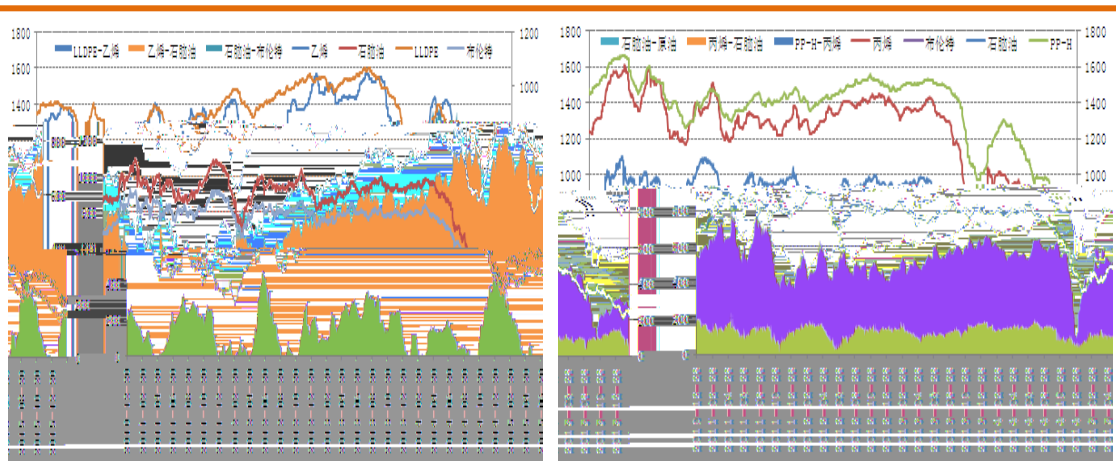


Wind

2 19 / 33.48 /  
 313.39 / 2 5 1.07 / 12.5 / CFR  
 / 930.5 / 2 5 40 / FOB  
 585.5 / 2 5 3 /

**3 LLDPE**

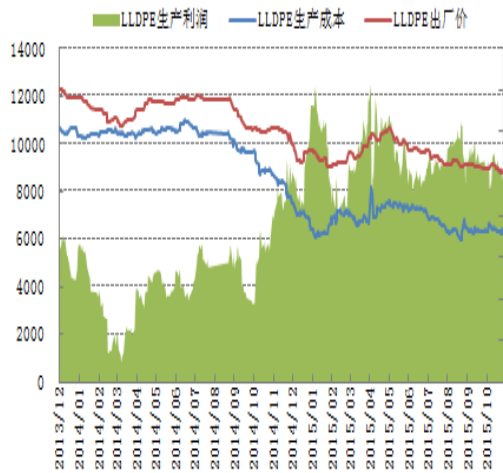
**4 PP**



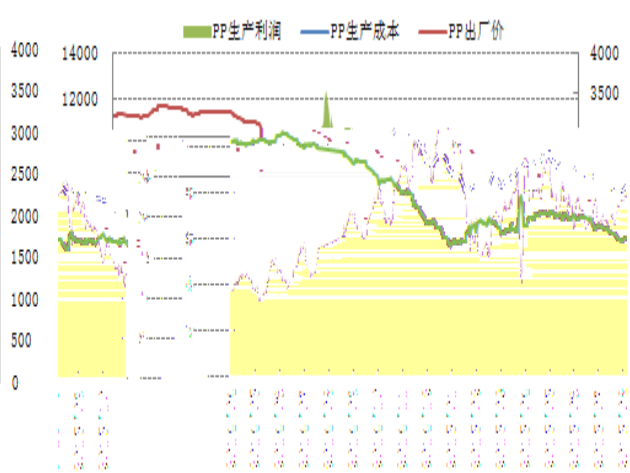
Wind

LLDPE 7042 8500-8900 / PP  
 T30S 6150-6600 /  
 PE 3376 / PP 1521  
 / PE PP  
 PE/PP

5 LLDPE

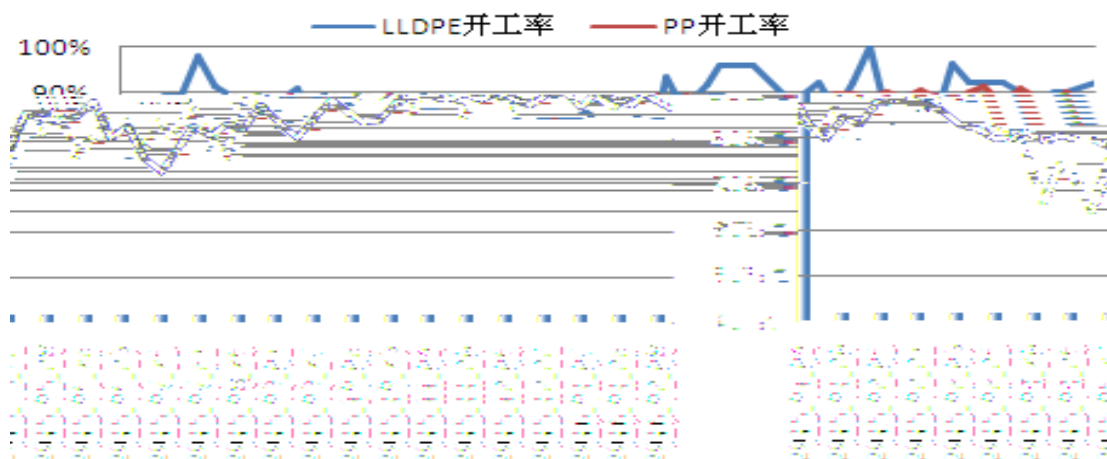


6 PP



二、石化开工高位稳定，短期消化库存为主

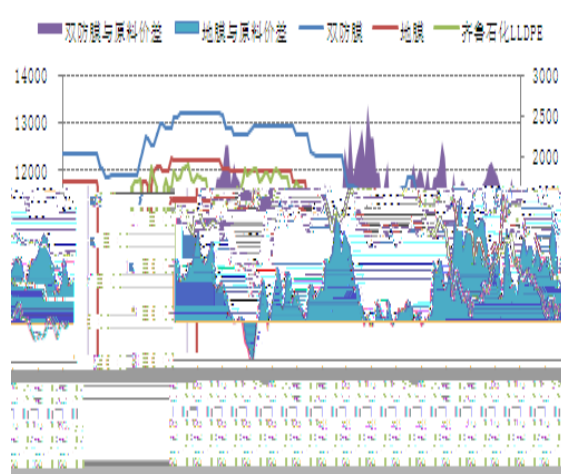
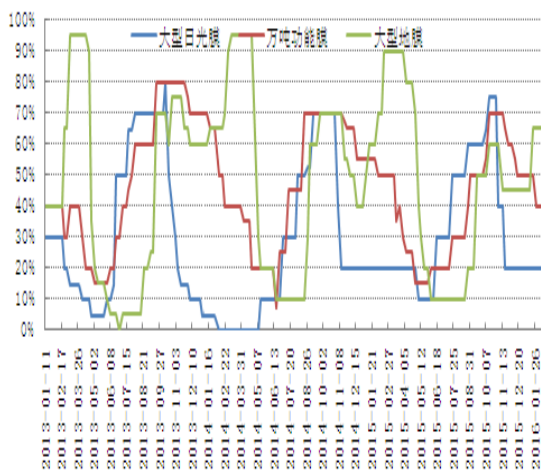
LLDPE				45			2	18
			30			30		
				1	20		1	23
			2	15		10-20		
30	/	PE	2016	4		7042		
PP							3	
			11	23		55	1	23
								12
30			1	8		2	6	2
			30	PP	12	22		S1003
			30	/	PP	2016	4	
					LLDPE	92.12%		2.11% PP
					86.93%			3.06%
					100			
					3			



三、下游节后开工缓慢回升，影响有待观察

LLDPE

5-8



PP

58%

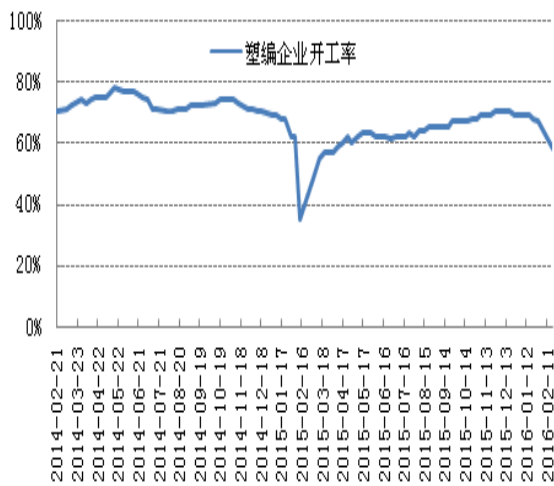
7-12

BOPP

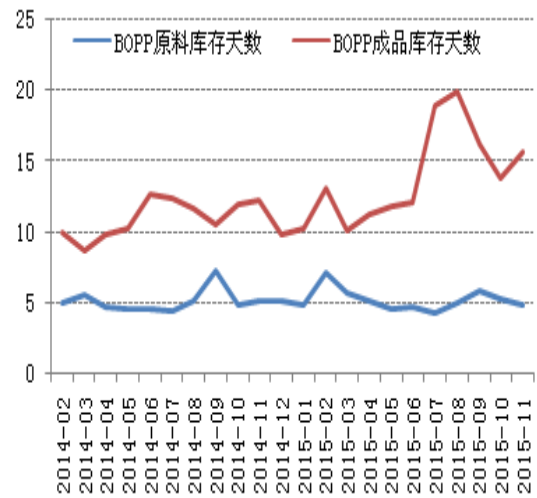
PP

BOPP

10



11 BOPP



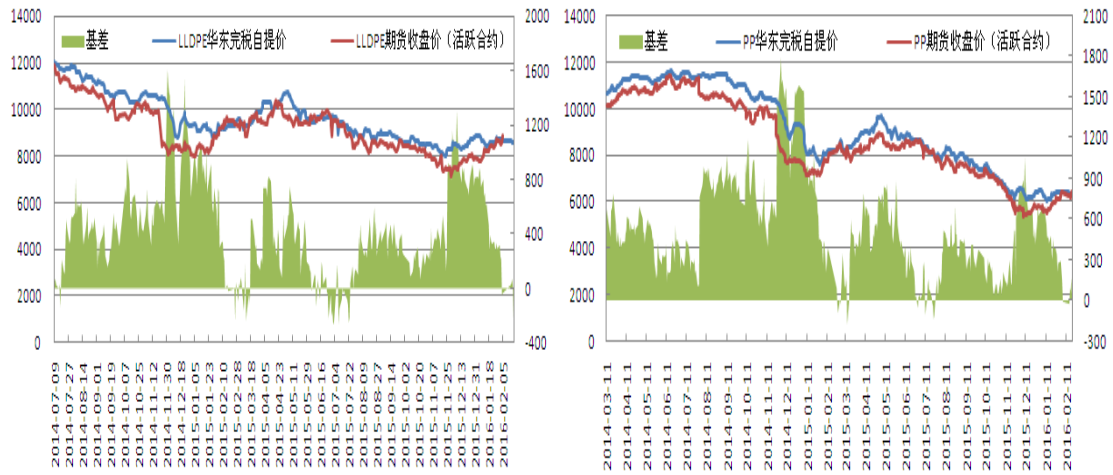
四、塑料现货贴水增加，期价上行空间有限

LL	PP			2	15		
	L1605	-245	/	2	5	-35	/ PP
	PP1605	-154	/	2	5	-28	

/

12 LLDPE

13 PP



四、结论及建议

L/PP1605

K



—



020-22139858

510623



020-22139813

5



020-22139817

1007-1012



020-23382623

