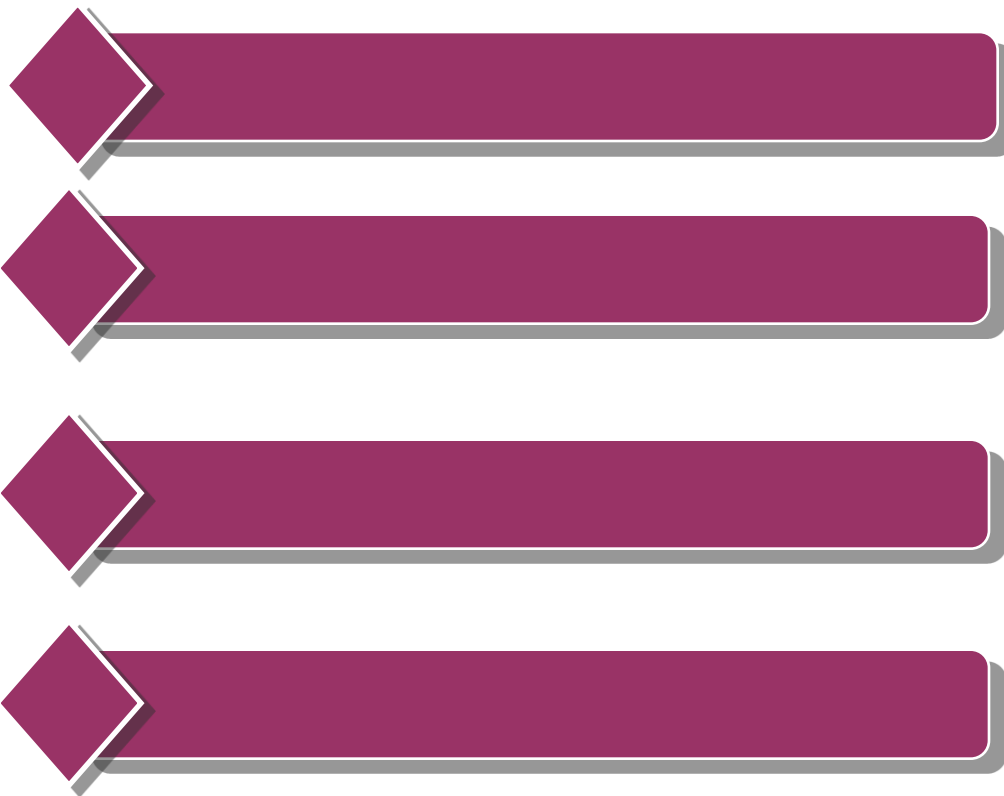




可信 亲切 专业 | 您身边的期货专家

目录



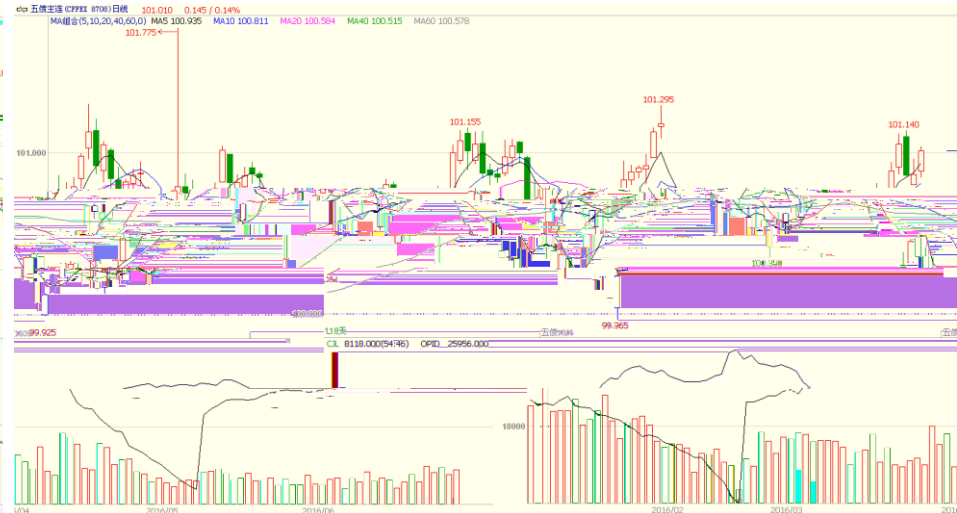




10

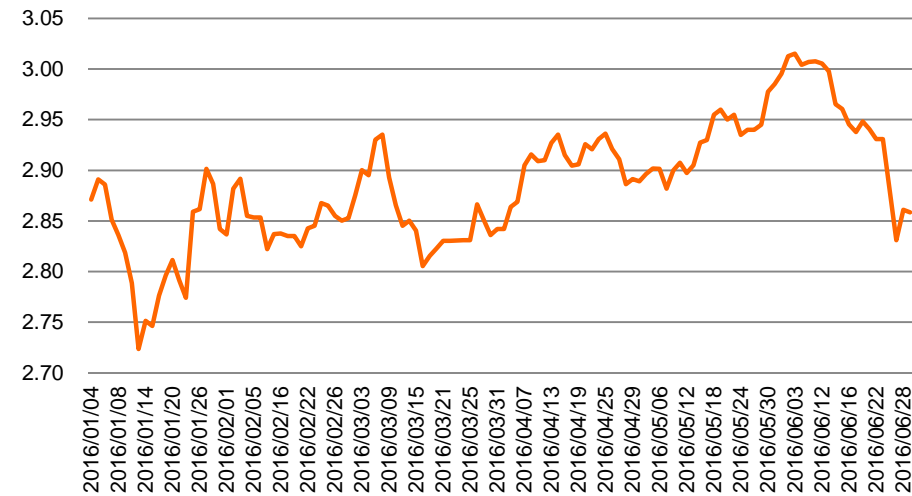


5



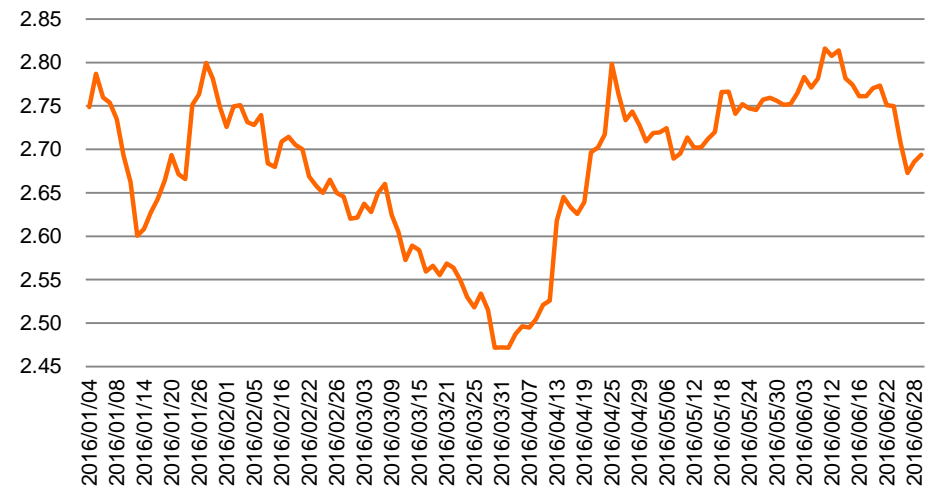
10

%



5

%



2016

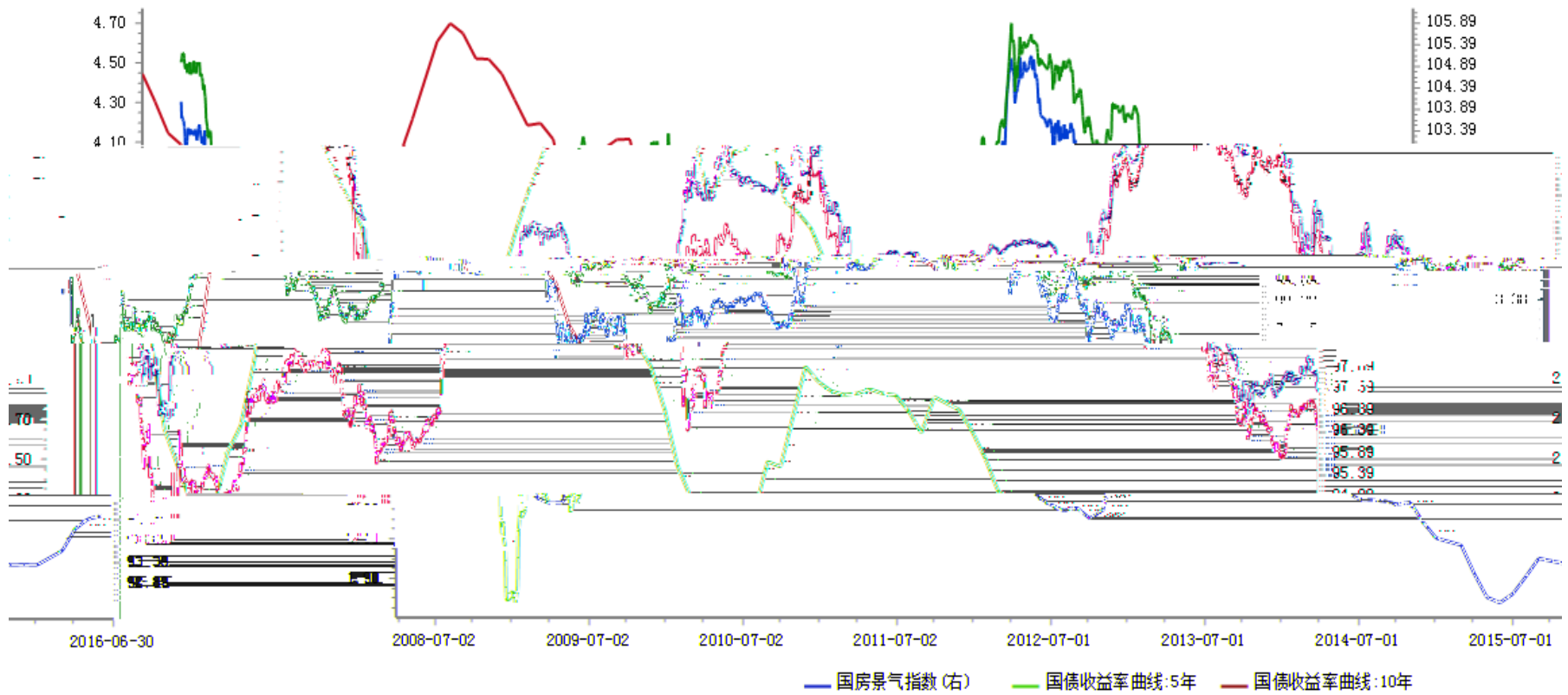


-
-
-
-



-
-





来源: 同花顺iFind

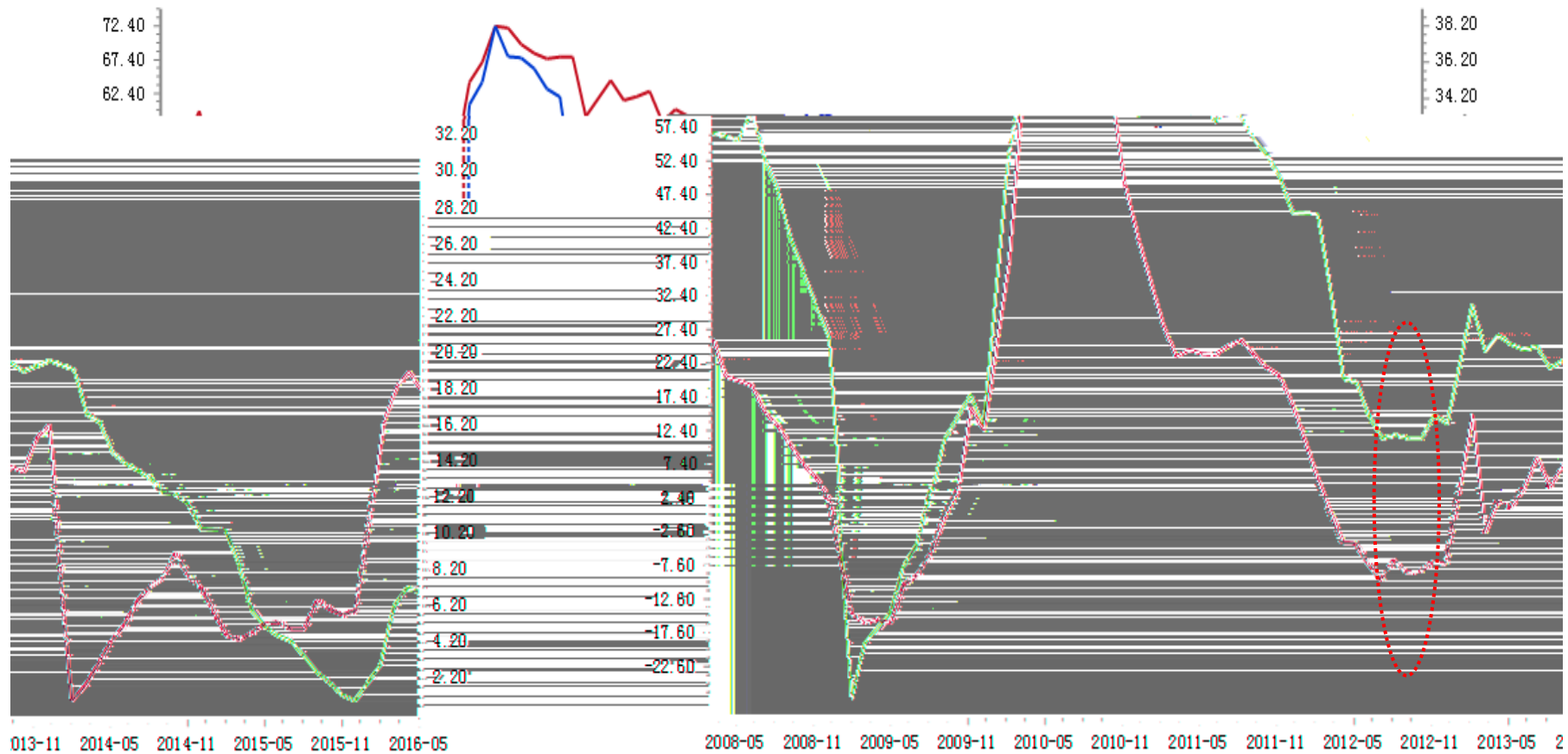
数据



L



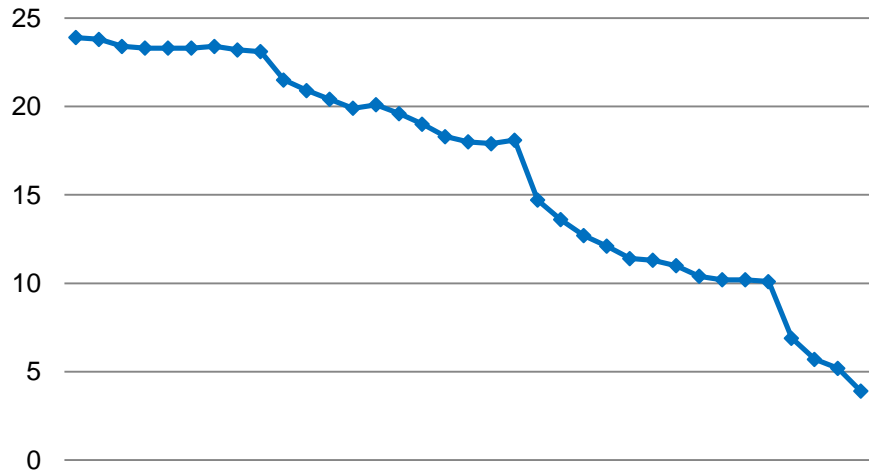
PMI 50



面积:累计同比

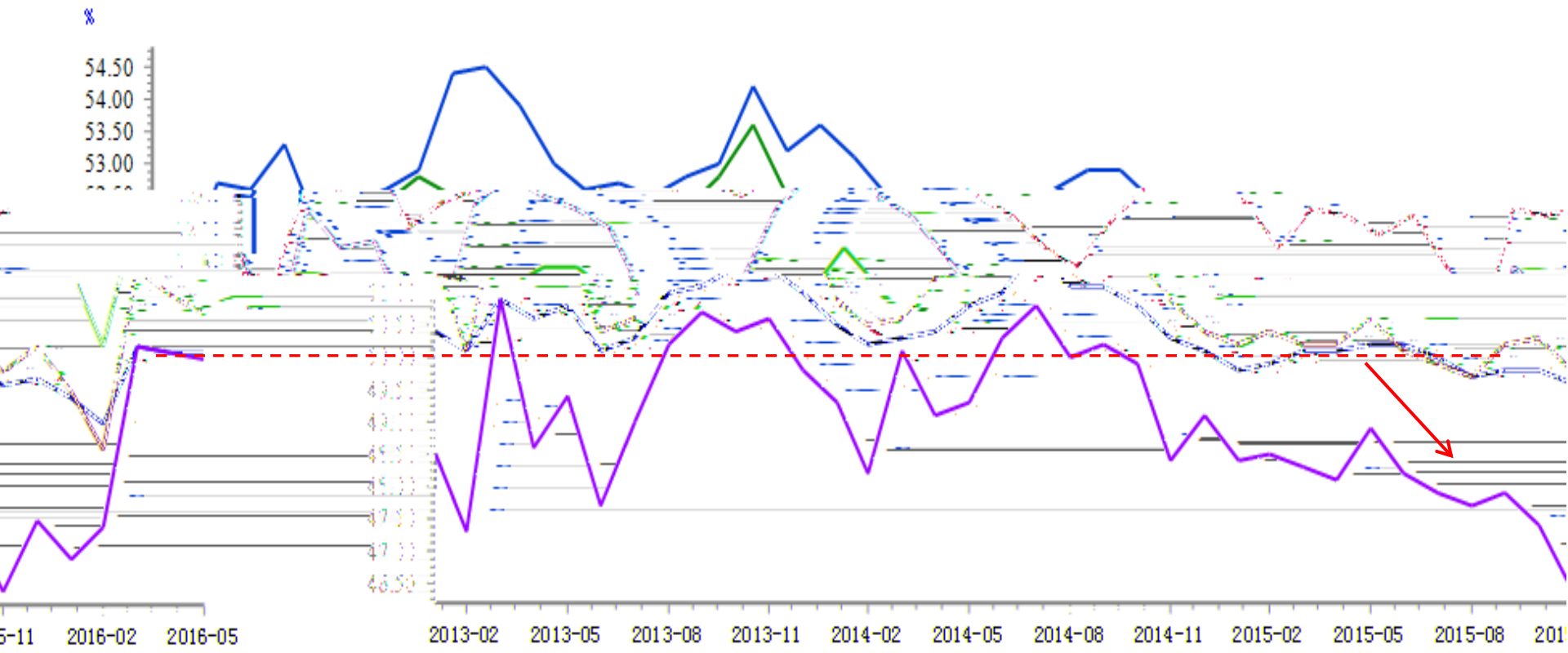
数据来源:同花顺iFinD

— 房地产开发投资:累计同比(右) — 商品房新开工面积:累计同比





PMI



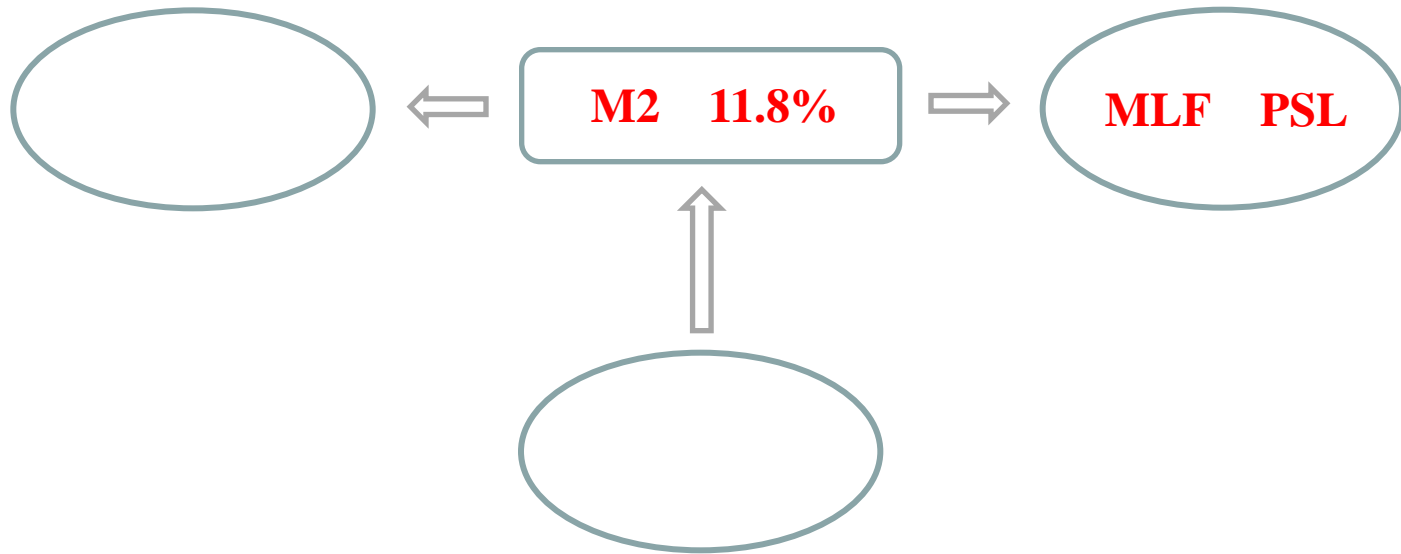
—新出口订单 — 制造业PMI — 制造业PMI:生产 — 制造业PMI:新订单 — 制造业PMI

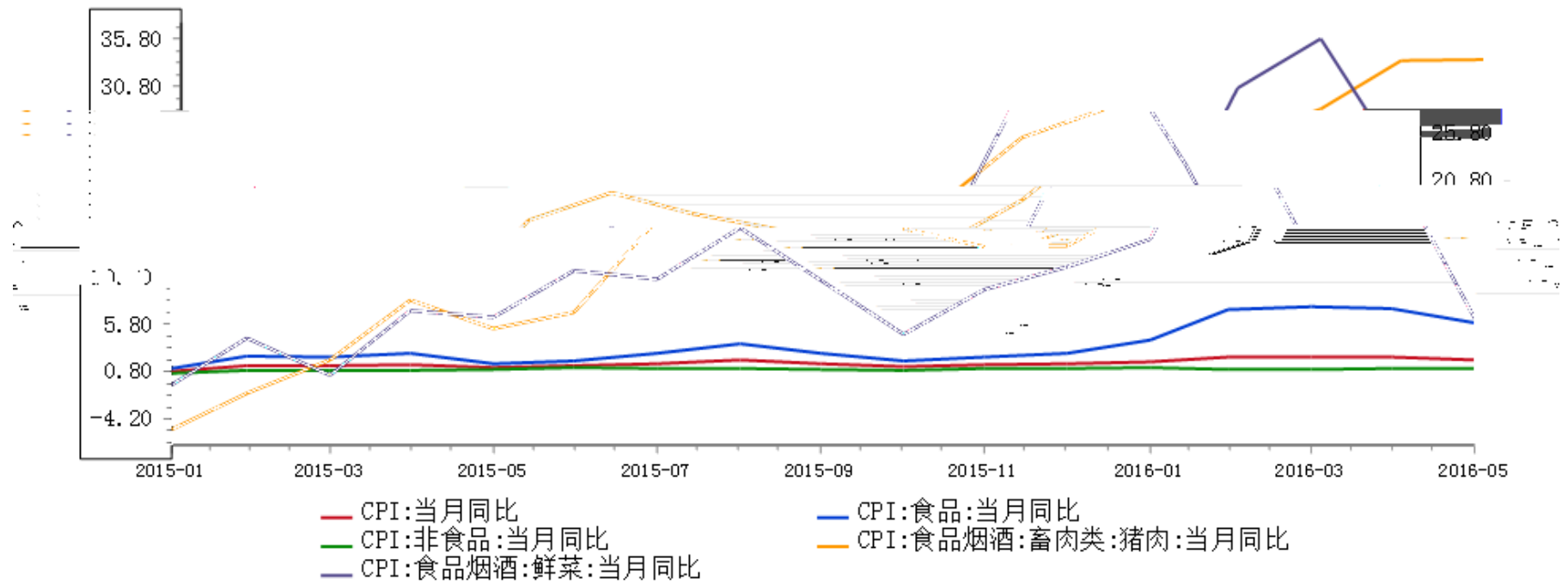
源: 同花顺iFinD

数据来



-
-



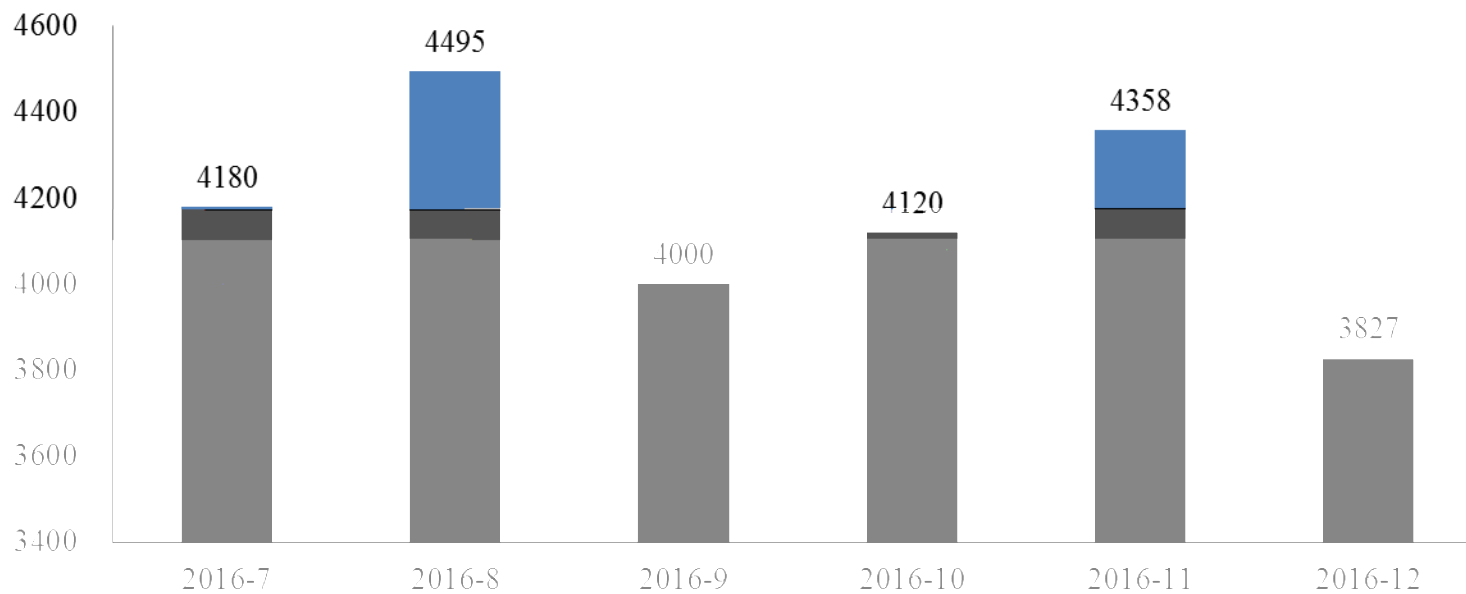


数据来源: 同花顺iFinD





信用债到期量（亿元）



Wind





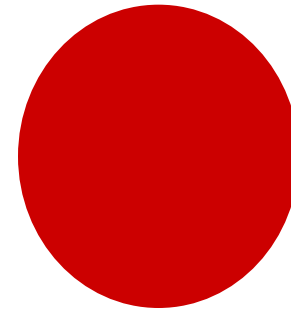
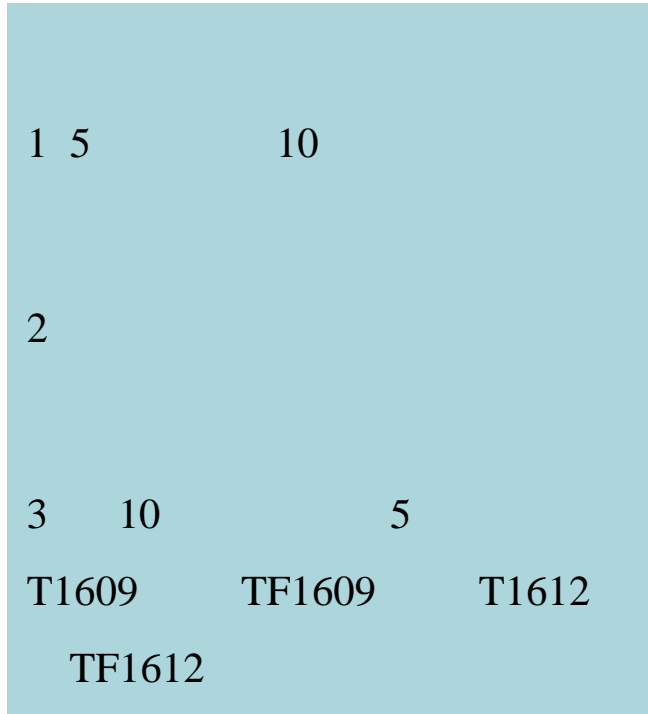


5



● 10

5





THANK YOU

